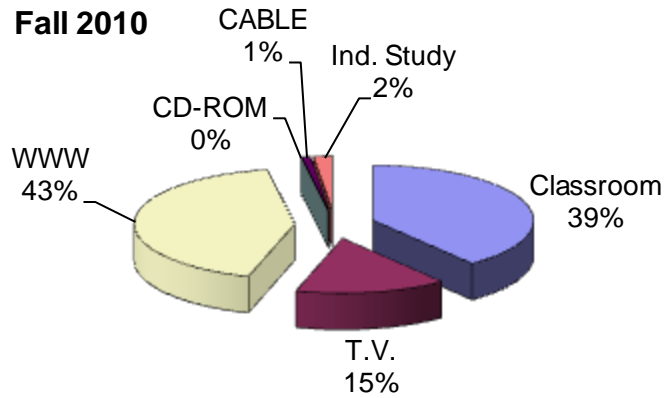


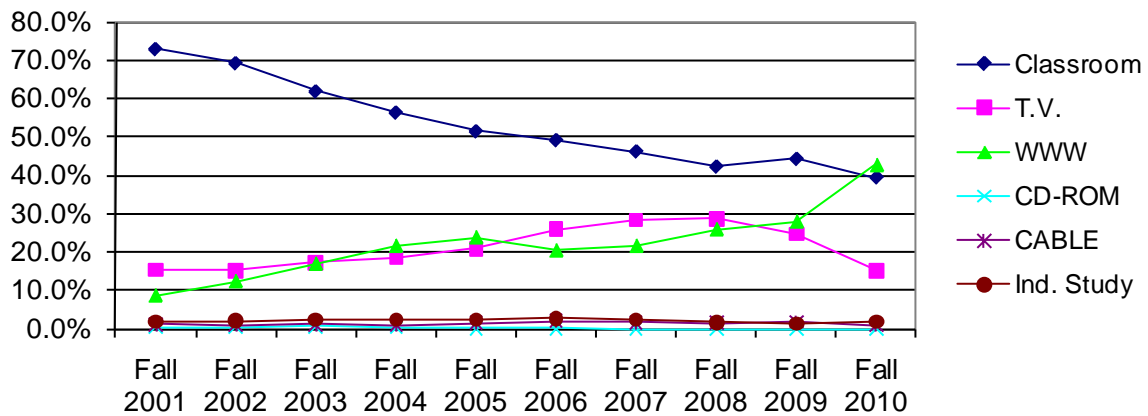
Coastline Community College

Student Demographics

Method of Instruction



CCC Seats by Mode of Instruction



	Fall 2001	Fall 2002	Fall 2003	Fall 2004	Fall 2005	Fall 2006	Fall 2007	Fall 2008	Fall 2009	Fall 2010
Classroom	15051	14387	12198	11403	10657	11030	12618	11737	12041	9784
T.V.	3154	3139	3402	3749	4338	5814	7751	7974	6730	3777
WWW	1753	2542	3312	4348	4910	4551	5867	7168	7579	10571
CD-ROM	82	93	112	55	16	12	0	0	0	0
CABLE	215	203	226	196	300	440	435	424	508	207
Ind. Study	384	417	467	487	489	595	633	474	347	469
Total	20639	20781	19717	20238	20710	22442	27304	27777	27205	24808

	Fall 2001	Fall 2002	Fall 2003	Fall 2004	Fall 2005	Fall 2006	Fall 2007	Fall 2008	Fall 2009	Fall 2010
Classroom	72.9%	69.2%	61.9%	56.3%	51.5%	49.1%	46.2%	42.3%	44.3%	39.4%
T.V.	15.3%	15.1%	17.3%	18.5%	20.9%	25.9%	28.4%	28.7%	24.7%	15.2%
WWW	8.5%	12.2%	16.8%	21.5%	23.7%	20.3%	21.5%	25.8%	27.9%	42.6%
CD-ROM	0.4%	0.4%	0.6%	0.3%	0.1%	0.1%	0.0%	0.0%	0.0%	0.0%
CABLE	1.0%	1.0%	1.1%	1.0%	1.4%	2.0%	1.6%	1.5%	1.9%	0.8%
Ind. Study	1.9%	2.0%	2.4%	2.4%	2.4%	2.7%	2.3%	1.7%	1.3%	1.9%
Total	100.0%	100.0%	100.0%	100.0%	100.0%	100.0%	100.0%	100.0%	100.0%	100.0%

-NOTES: Includes duplicated seat counts -Excludes Military enrollments
 -Source: CCC MIS Student Basic Data and Course Basic Data, Fall 2001-Fall 2010
 Prepared by Shañon Gonzalez – CCC Institutional Research Department